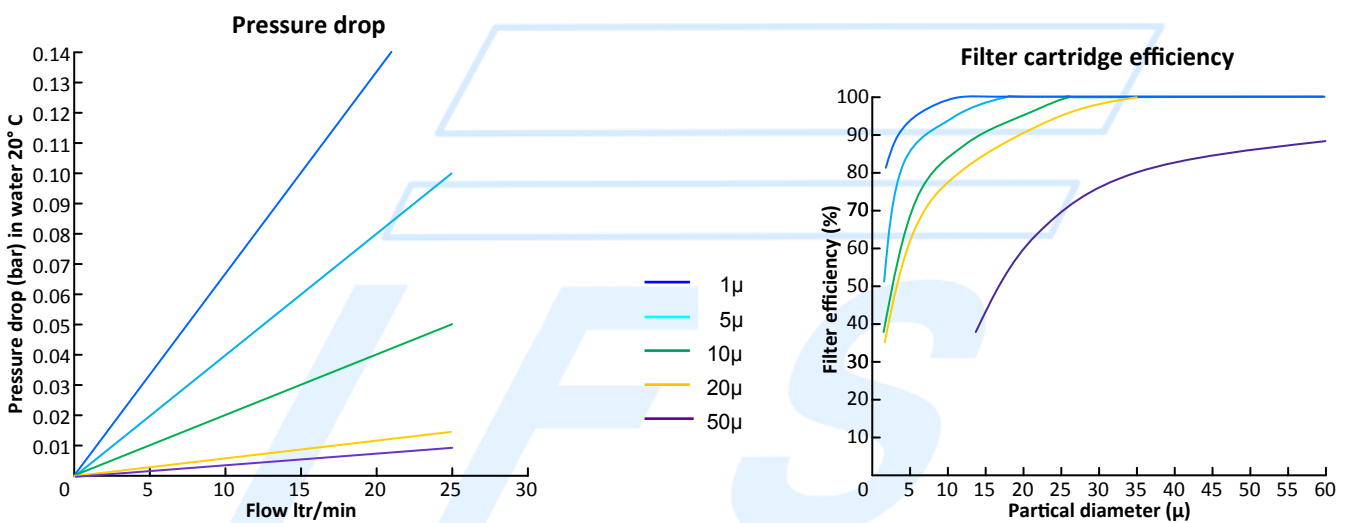


DATA SHEET FILTERCARTRIDGES

Meltblown

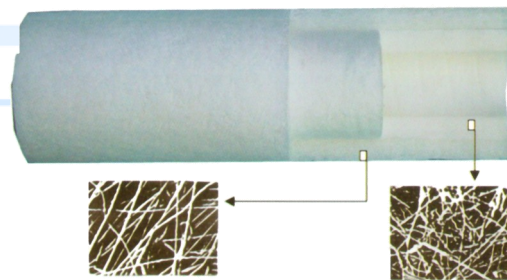
The LFS melt blown filter cartridges are made of thermally bonded micro fibers that help create a strong filter that results in a more than average depth filtration. The cartridge is different from the traditional fabric filter materials. The fiber diameter averages from 5 – 25 μ and has an irregular and porous three dimensional stereoscopic structure, small micropore (average size less than 40 μ), large porosity (more than 75%), which effectively controls the filter precision. They are made of high quality FDA polypropylene.

The cartridges are true-graded to capture particles throughout the entire filter body, ensuring high dirt holding capacity and a long life.



Cartridge specification:

Inside diameter: 28 or 38 mm.
Outside diameter: 45 – 120 mm
Layers: 3 layer
Length: up to any length required.
Nominal precision: 0,5 – 100 μ
Max. operating temp: 60°C
Recommended differential pressure: 2,2 bar



Coarse outside layer provides enough dirty-absorbent space, reduces filter resistance and provides enough structure rigidity.

Fine inside layer catches small particles and assure the filter precision.

The filter efficiency continuously keeps stable when the pressure loss is lower than 2.2 bar, but decreases when the pressure loss is higher than 2.2 bar. When the pressure loss exceeds 2.6 bar it becomes lower than the starting value. As a result it is recommended that 2.6 bar is the highest allowable and 2.2 bar the most ideal pressure loss.

Liquid Filtration Systems